



STROUD DISTRICT COUNCIL

Council Offices • Ebley Mill • Ebley Wharf • Stroud • GL5 4UB
Telephone 01453 766321 • Facsimile 01453 750932
www.stroud.gov.uk

ENVIRONMENT COMMITTEE

OFFICER REPORT

NAME OF REPORT UPDATE	Gloucestershire Resources and Waste Partnership – Meeting of 17 Jan 2023
BRIEF REPORT	
<p>The Gloucestershire Resources and Waste Partnership oversees strategic waste matters in Gloucestershire. Membership consists of all six district authorities and the county council, with representation at meetings from all. The last meeting convened on the 17th January 2023 and the following agenda items were discussed:</p> <ul style="list-style-type: none">• Ubico Business Plan• Gloucestershire Joint Resources and Waste Strategy Consultation Feedback• Recycling Performance Benchmarking <p>This report summarises the detail of the meeting in January, pending formal minutes. It focuses on matters specifically in relation to SDC.</p> <ol style="list-style-type: none">1) Ubico Business Plan – this was a verbal presentation from Beth Boughton the Ubico Chief Executive and reflected the detail given to this committee on 8th December 2022.2) Gloucestershire Joint Resources And Waste Strategy Consultation Feedback – For context the consultation detail is supplied as Appendix A. The responses were summarised as follows:<ul style="list-style-type: none">○ Broad support for the strategy, especially in terms of recognising the need to increase performance rates and to undertake ongoing and greater levels of public engagement. Many examples of engagement methods are stated, which would sit more appropriately within annual business and engagement plans.○ A significant number of comments relating to specific aspects of services at an operational level, for which this strategy is not intended to address.○ Specific support for increased collection of key materials, such as plastics and food waste. However, realistic targets for these need to be considered in terms of the interim nature of this strategy.○ Some conflicting responses, stating both the need for focus more on waste prevention and on maximising energy outputs from recovery.○ Specific requests to engage more proactively on service changes, especially with the planning authority and others potentially impacted by change. This includes cascading considerations throughout the circular economy.○ Points raised regarding specific local issues, such of HRC operations at Pyke Quarry and growth of local infrastructure, which are not the purpose of this strategy and which would be handled through existing planning controls.3) 2020/21 Recycling Performance Benchmarking – benchmarking statistics were presented as below. The figures highlight the good performance of recycling within the Stroud district, ranking the council 14th out of 338 local authorities in England, based on recycling rate.	

The graphs entitled 'recycling yield performance' illustrate good results when compared to peers. However, the graphs do highlight the comparative poor performance in the recycling of paper and cardboard. Officers believe this reflects the containment method used in Stroud, which is limited and may prevent residents from presenting all recyclable material.

The graphs entitled 'Forecast performance 2022/23' compare SDC with the other districts in Gloucestershire. Interestingly, bar one or two anomalies, it is clear that recent trends are reflected across the county.

The data for Stroud District Council and other local authorities is publicly available via Letsrecycle.com and <https://laportal.wrap.org.uk/>

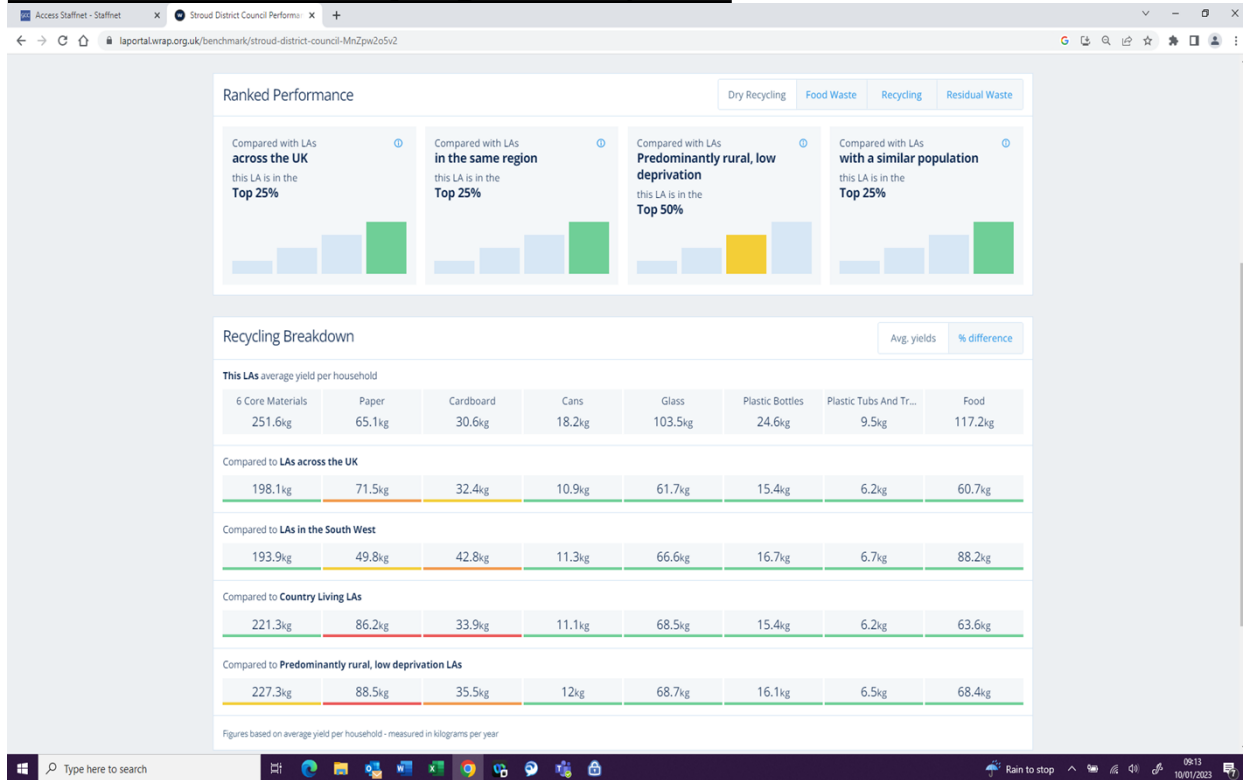
2020/21 Recycling Performance Benchmarking

Relative Performance

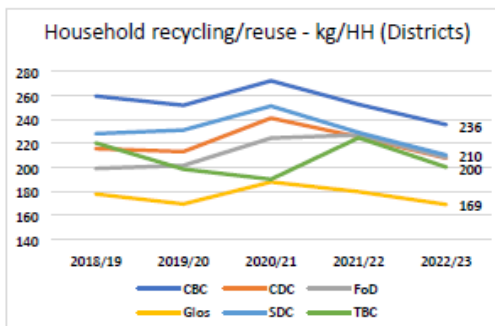
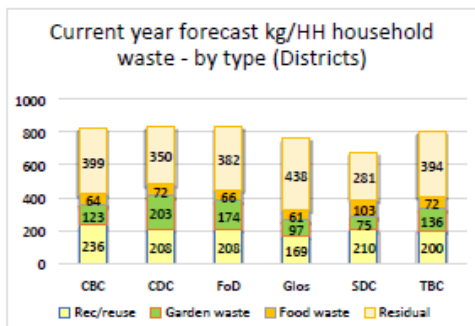
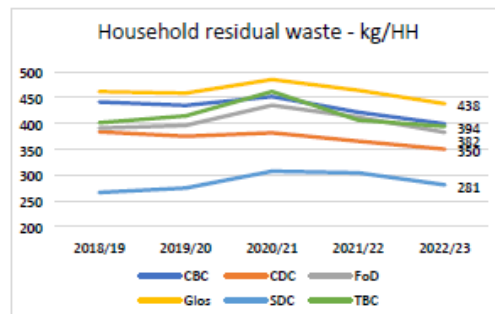
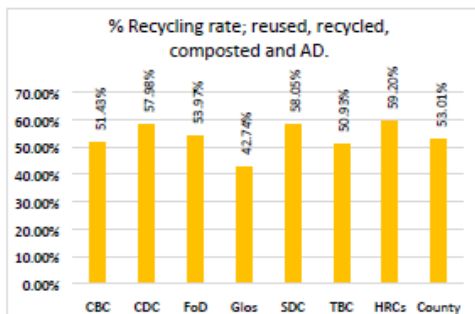
Rank Authority Recycling rate (Gloucestershire Country authorities highlighted yellow)

- 1 St Albans City and District Council WCA 64.2% (109kg/hh food waste, 263.4kg/hh core dry recycling)
- 2 South Oxfordshire District Council WCA 63.6% (112.3kg/hh food waste, 279.3kg/hh core dry recycling)
- 3 Three Rivers District Council WCA 63.1% (zero food waste in 2021, 293.2kg/hh core dry recycling)
- 4 Vale of White Horse District Council WCA 62.6% (107.5kg/hh food waste, 264.kg/hh core dry recycling)
- 5 Surrey Heath Borough Council WCA 61.3% (125.kg/hh food waste, 281.7kg/hh core dry recycling)
- 6 East Riding of Yorkshire Council Unitary 60.8% (24kg/hh food waste, 241.5kg/hh core dry recycling)
- 7 North Somerset Council Unitary 60.4% (94kg/hh food waste, 210.3kg/hh core dry recycling)
- 8 Dorset Council Unitary 60.1% (100.2kg/hh food waste, 224.6kg/hh core dry recycling)
- 9 East Devon District Council WCA 60.0% (111.7kg/hh food waste, 211.8kg/hh core dry recycling)
- 10 Tandridge District Council WCA 59.9% (97.2kg/hh food waste, 287.4kg/hh core dry recycling)
- 11 South Northants District Council WCA 59.6% no data
- 12 Oxfordshire County Council WDA 59.5% n/a (county does not collect)
- 13 Stratford-on-Avon District Council WCA 59.4% (24kg/hh food waste, 255.1kg/hh core dry recycling)
- 14 Stroud District Council WCA 59.4% (117.2kg/hh food waste, 251.6kg/hh core dry recycling)
- 15 Bath and North East Somerset Unitary 59.2% (60.7kg/hh food waste, 198.1kg/hh core dry recycling)
- 16 Cotswold District Council WCA 58.9% (86kg/hh food waste, 217kg/hh core dry recycling)
- 19 South Gloucestershire Council Unitary 58.5% (89kg/hh food waste, 219.8kg/hh core dry recycling)
- 49 Forest of Dean District Council WCA 53.6% (74.6kg/hh food waste, 191.8kg/hh core dry recycling)
- 60 Somerset Waste Partnership Unitary 52.4% (90.2kg/hh food waste, 183.4kg/hh core dry recycling)
- 68 Cheltenham Borough Council WCA 50.7% (73.9kg/hh food waste, 199kg/hh core dry recycling)
- 69 Gloucestershire County Council WDA 50.6% n/a (county does not collect)
- 90 Tewkesbury Borough Council WCA 48.6% (80.9kg/hh food waste, 244.1kg/hh core dry recycling)
- 115 Bristol City Council Unitary 46.4% (84.6kg/hh food waste, 179.1kg/hh core dry recycling)
- 144 Gloucester City Council WCA 43.8% (77.3kg/hh food waste, 177.8kg/hh core dry recycling)
- 153 Worcestershire County Council WDA 43.3% n/a (county does not collect)
- 165 Wiltshire Unitary 42.3% (zero food waste in 2021, 230.3kg/hh core dry recycling)
- 205 Swindon Borough Council Unitary 39.6% (94.2kg/hh food waste, 150.6kg/hh core dry recycling)
- 334 Liverpool City Council WCA 23.5% (zero food waste in 2021, 162.4kg/hh core dry recycling)
- 335 Birmingham City Council Unitary 22.5% (zero food waste in 2021, 115.8kg/hh core dry recycling)
- 336 Newham LB WCA 20.9% (zero food waste in 2021, 114.5kg/hh core dry recycling)
- 337 Tower Hamlets LB Unitary 19.3% (zero food waste in 2021, 93.3kg/hh core dry recycling)
- 338 Barrow-in-Furness Borough Council WCA 17.9% (zero food waste in 2021, 112.6kg/hh core dry recycling)

Stroud District Council Recycling Yield Comparison



Forecast Performance 2022/23



REPORT SUBMITTED BY
DATE

Michael Towson, Community Services Manager
20 March 2023